

BL8-FM9 & BL8-SFM9 9" LED Flush Mount

Catalog #	Prepared by	LiteHarbor
Project	Date	
Notes		



BL8-FM9



BL8-SFM9

ORDER MATRIX | Example:BL8-FM9

A	B	C	D	E	F	G
A	Series					
BL8-FM9	9" Round LED Flush Mount					
BL8-SFM9	9" Square LED Flush Mount					
B	Input Voltage					
	120V					
277	277V					
U	120-277V					
C	Dimmable					
	Non-Dimmable					
DM	Dimmable					
D	LED Available					
Cree	Cree					
Citizen	Citizen					
Epistar	Epistar					
Seoul	Seoul					
Osram	Osram					

Description

An architecturally pleasing, easy to install and low profile slim LED instant mount round and square aperture downlighting.

Slim line, light weight and sleek look, provides more uniform light and an instant on.

It is a low profile downlight intended for ceiling or wall mount applications.

This luminaire offers the appearance of a recessed downlight but is actually surface mounted.

Applications

Slim LED Flush Mount Downlight is characterized by a completely flat lens with a narrow flange, giving it an architecturally pleasing look.

This downlighting solution offers an affordable alternative to Air-Seal IC recessed housings or Fire-Rated boxes, reducing material and installation costs.

Features

LED 9" flush mount

Decorative flush mount LED fixture

18.5W Equal to a traditional 100W lamp

LED CEILING LIGHT



E	Lumen Output
BL8-FM9	1180 Lumen
BL8-SFM9	1190 Lumen

F	Color Temperature
27K	2700K
40K	4000K
50K	5000K
60K	6000K
	Tunable
	(3000K, 4000K, 5000K, choose any 2 of them)

G	Emergency System
	Without Emergency Battery Backup
EM	With Emergency Battery Backup

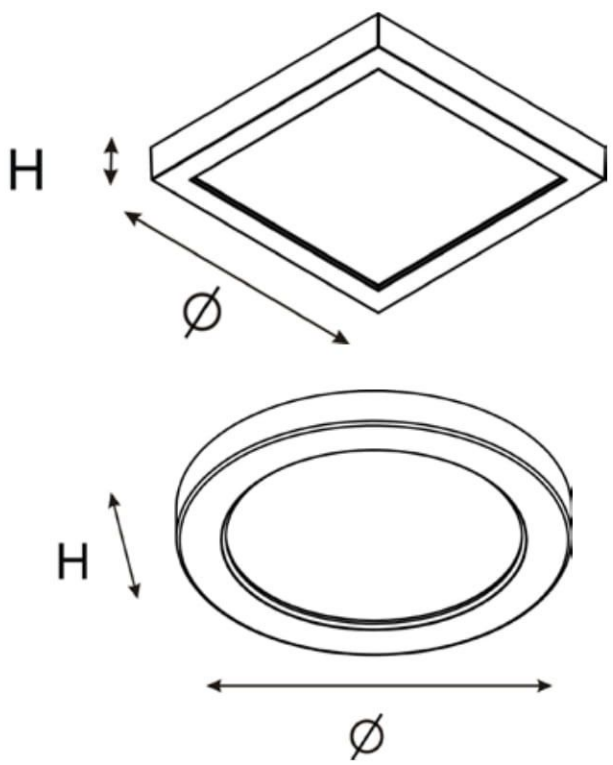
84% energy savings
Damp location listed
Mounts directly to 3" and 4" junction boxes
Easy to install

Finish
Available in White, Brushed Nickel, and Bronze

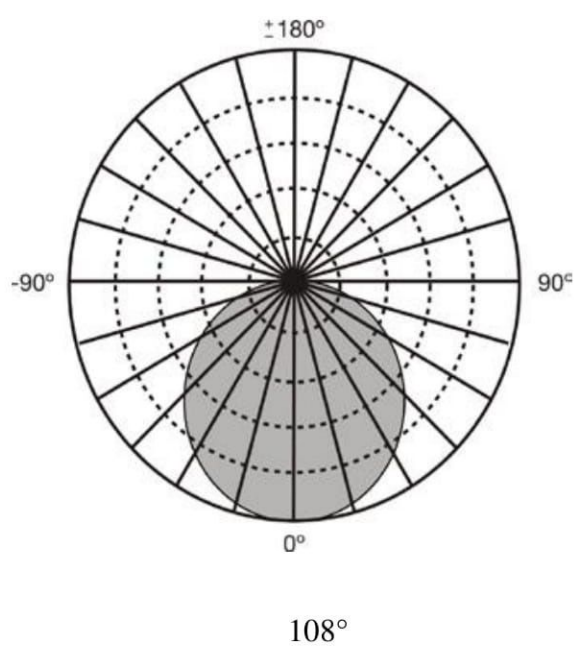
Application
Residential
Office
Retail
Hospitality

Listing & Warranty
ENERGY STAR
2-Year Limited Warranty

Dimensions
Ø: 9"xH:1"



Light Distribution



Emergency

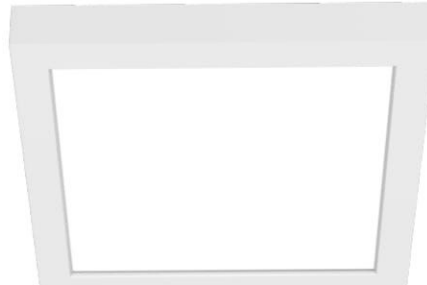
24 hours recharge time

>90 minute operation from battery

over-charge/discharge protection

Dimensions

Ø: 9"xH:2 3/16"



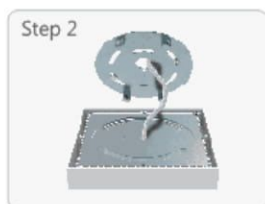
Installation Instruction

Fast and Easy Installation

- Mounts directly to any 3" and 4" junction boxes
- The quick connector makes easy and fast connection, the universal mounting plate ensure a clean and tight fit.



Simply screw the unique design universal mounting plate to the junction box



Make your connections using the quick connect included, and fit into place.



Snap the fixture onto the mounting plate.



Installation finished, Enjoy the sleek ceiling.

Ordering Guide

Series	Input Voltage	Dimmable	CCT	Finish	Emergency System
<input type="checkbox"/> BL8-FM9 9"Round LED Flush Mount	<input type="checkbox"/> 110V <input type="checkbox"/> 277V <input type="checkbox"/> 110V-277V	<input type="checkbox"/> Non-Dimmable <input type="checkbox"/> Dimmable	<input type="checkbox"/> 2700K <input type="checkbox"/> 3000K <input type="checkbox"/> 4000K <input type="checkbox"/> 5000K <input type="checkbox"/> 6000K <input type="checkbox"/> Tunable (3000K, 4000K, 5000K, choose any 2 of them)	<input type="checkbox"/> White <input type="checkbox"/> Bronze <input type="checkbox"/> Satin Nickel	<input type="checkbox"/> Without Emergency Batty Backup <input type="checkbox"/> With Emergency Batty Backup
<input type="checkbox"/> BL8-SFM9 9"Square LED Flush Mount					

LED CEILING LIGHT



1055 CLARK BLVD, BRAMPTON, ON, L6T 3W4 Canada
9057998009